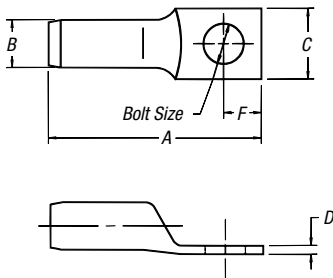


## Compression Connectors for Copper Conductor

### Copper One-Hole Lugs for 600V to 35kV Applications



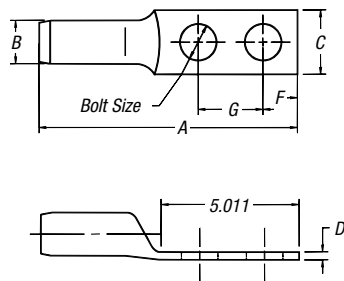
These connectors are recommended for up to 15kV applications. Installed with standard T&B Cat. No. TBM15I, 13100A, TBM14M hydraulic compression tools with special rounding dies. The compression forms the connector and conductor into a solid mass to provide an optimum electrical bond between connector and conductor. The rounding die-overlapped compressions provide a smooth, round surface. This, combined with the tapered barrel ends, addresses the controlling of potentially damaging electrical stresses of high voltages.



INSTALLING TOOLS											
13100A, TBM15I* & TBM14M											
CAT. NO.	CABLE SIZE <sup>†</sup>	STUD SIZE (IN.)	DIMENSIONS (IN.)						DIE SET CAT. NO.	STRIP LENGTH (IN.)	COLOR CODE
			A	B	C	D	E	F			
54440	#4 AWG	3/8	2.08	.81	.58	.08	3/8	1/2	15CA29R	1 1/16	GRAY
54443	#2 AWG	3/8	2.25	.81	.66	.09	3/8	1/2	15CA33R	1 1/16	BROWN
54448	#1 AWG	3/8	2.36	.81	.69	.10	3/8	1/2	15CA37R	1 19/32	GREEN
54409	1/0 AWG	3/8	2.38	.81	.75	.12	3/8	1/2	15CA42R	1 3/8	PINK
54460	2/0 AWG	1/2	2.73	1.06	.83	.12	1/2	1/2	15CA45R	1 3/8	BLACK
54465	3/0 AWG	1/2	2.81	1.06	.94	.12	1/2	1/2	15CA49R	1 3/4	ORANGE
54470	4/0 AWG	1/2	2.78	1.06	1.00	.13	1/2	1/2	15CA54R	1 13/16	PURPLE
54413	250 kcmil	1/2	3.19	1.06	1.07	.14	1/2	1/2	15CA60R	2 1/32	RUBY

<sup>†</sup> Cable size: Concentric and compact strandings  
 \* Cat. No. TB15500 Die Adapter required for TBM15I  
 Tooling: pp. F-80-F-100  
 Die Selector Chart: pp. F-101-F-104

### Copper Two-Hole Lugs for 600V to 35kV Application



INSTALLING TOOLS												
13100A, TBM15I* & TBM14M												
CAT. NO.	CABLE SIZE <sup>†</sup>	STUD SIZE (IN.)	DIMENSIONS (IN.)							DIE SET CAT. NO.	STRIP LENGTH (IN.)	COLOR CODE
			A	B	C	D	E	F	G			
54475	1/0 AWG	3/8	3.56	1 1/32	.77	.12	3/8	3/8	1.00	15CA42R	1 3/8	PINK
54476	2/0 AWG	1/2	4.67	9/16	.83	.12	1/2	1/2	1.75	15CA45R	1 3/8	BLACK
54478	3/0 AWG	1/2	4.75	5/8	.94	.12	1/2	1/2	1.75	15CA49R	1 3/4	ORANGE
54479	4/0 AWG	1/2	4.64	1 1/16	1.00	.13	1/2	1/2	1.75	15CA54R	1 13/16	PURPLE
54480	250 kcmil	1/2	5.17	3/4	1.08	.14	1/2	1/2	1.75	15CA60R	2 1/32	RUBY
54481	300 kcmil	1/2	5.16	13/16	1.19	.16	1/2	1/2	1.75	15CA66R	2 3/32	WHITE
54482	350 kcmil	1/2	5.35	7/8	1.29	.19	1/2	1/2	1.75	15CA71R	2 13/32	RED
54483	400 kcmil	1/2	5.35	59/64	1.36	.18	1/2	1/2	1.75	15CA76R	2 13/32	BLUE
54484	500 kcmil	1/2	5.60	1 1/16	1.54	.23	1/2	1/2	1.75	15CA87R	2 13/32	BROWN
54485	600 kcmil	1/2	5.83	1 11/64	1.70	.24	1/2	1/2	1.75	15CA94R	2 9/16	GREEN
54487	750 kcmil	1/2	6.13	1 19/64	1.89	.27	1/2	1/2	1.75	15CA106R	2 3/4	BLACK
54490	1000 kcmil	1/2	6.60	1 1/2	2.18	.31	1/2	1/2	1.75	15C125R•	2 29/32	—

• No adapter required – TBM15I only  
<sup>†</sup> Cable size: Concentric and compact strandings  
 TBM14M and 13100A UL Listing limited to 1/0 AWG–500 kcmil cable sizes  
 \* Cat. No. TB15500 Die Adapter required for TBM15I  
 Tooling: pp. F-80-F-100  
 Die Selector Chart: pp. F-101-F-104